

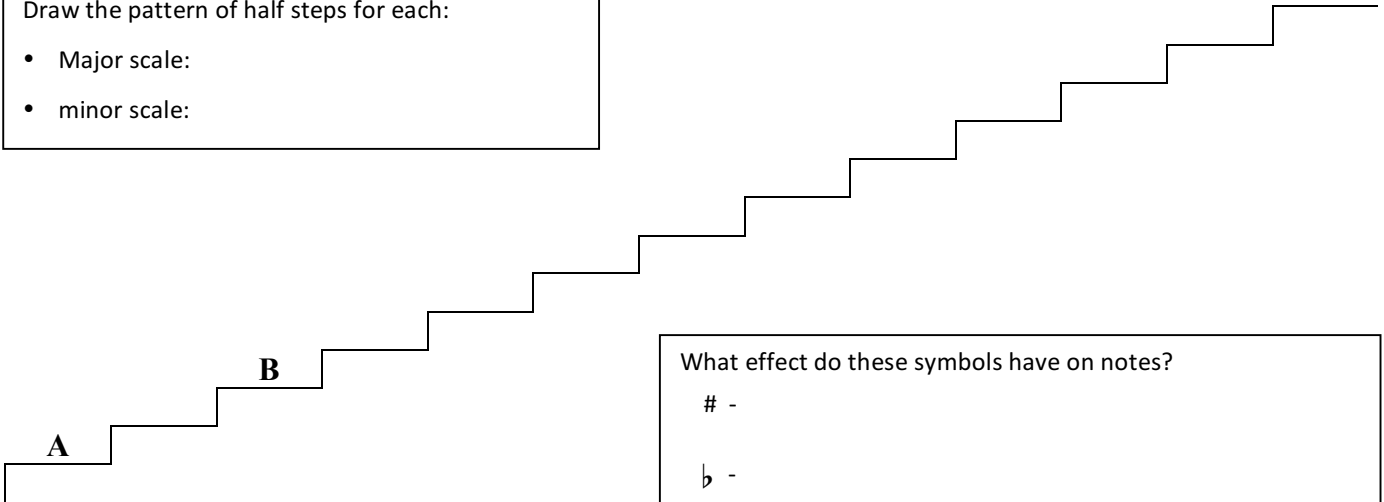
A GUIDE TO SCALE CREATION

The Half-Step Staircase

Part I Instructions: Complete the prompt inside each box, and finish writing in all of the natural notes to complete the *Half-Step Staircase*.

Draw the pattern of half steps for each:

- Major scale:
- minor scale:



What effect do these symbols have on notes?

-

b -

Define enharmonic:

Answer/Finish the following equations:

| | | |
|------------------------|---|---|
| F [#] = _____ | A = <u> B </u> ? (add symbols to make true) | D [#] = E ^b True or False |
| C ^b = _____ | E [#] = <u> F </u> ? | A ^b = F [#] True or False |
| E = _____ | G [#] = <u> A </u> ? | C ^b = B True or False |

Part II Instructions: Using note names, write the order in which all sharps and flats appear within a key signature. Then use the staff below and a clef of your choice to draw all seven sharps and flats as they appear in a full key signature.

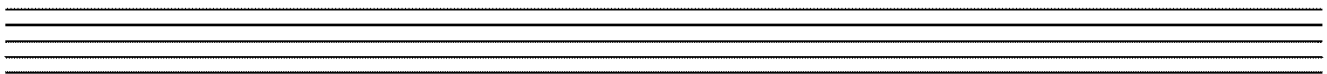
Order of Sharps:



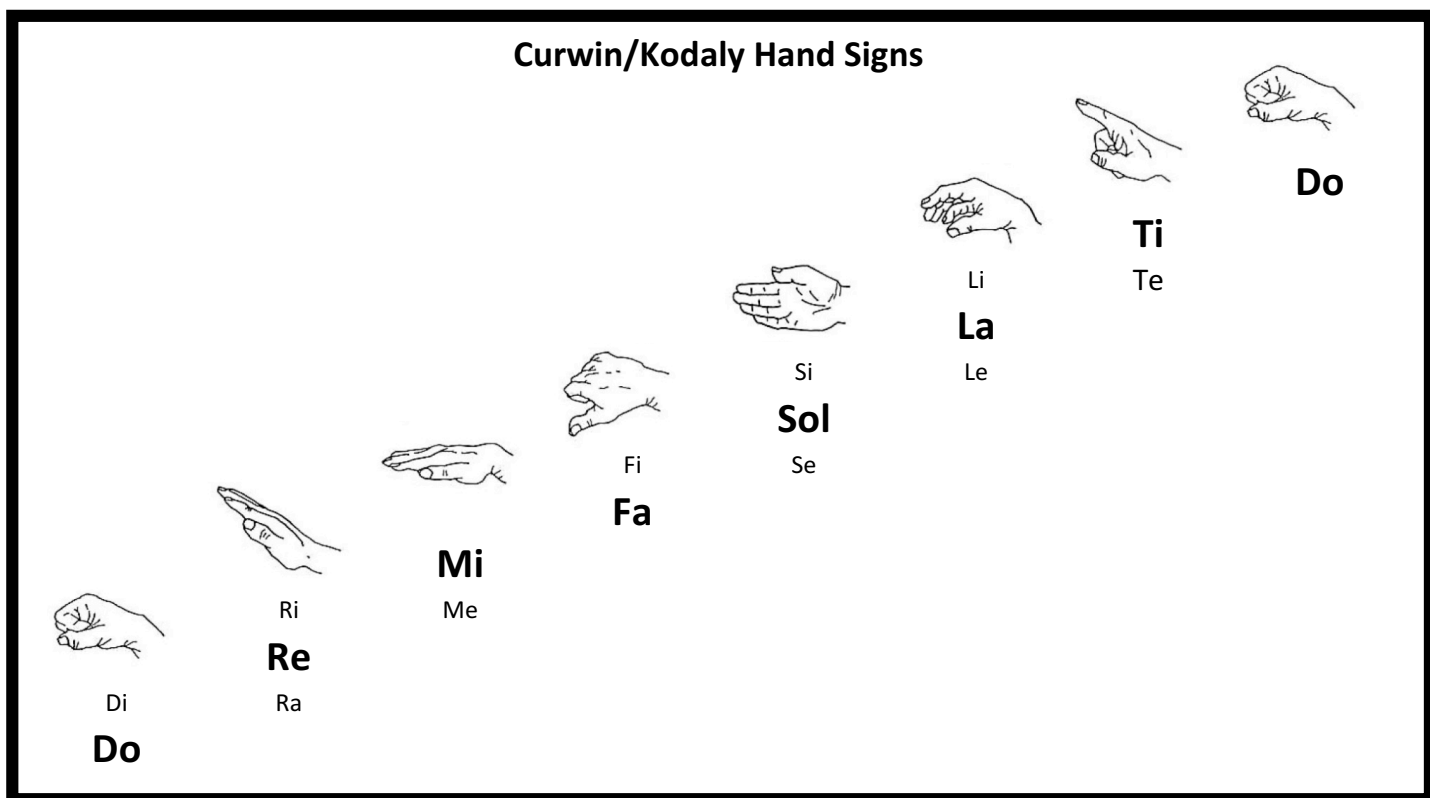
Order of Flats:



Part III Instructions: Use the clef and note-head of your choice to draw a B Major scale in the staff below. Use accidentals in front of each note as needed (do not draw a key signature).



A GUIDE TO SOLFEGE (or SOLFEGGIO)



Chromatic Scale Patterns

Chromatic Ascending: Do Di Re Ri Mi Fa Fi Sol Si La Li Ti Do

Chromatic Descending: Do Ti Te La Le Sol Se Fa Mi Me Re Ra Do

Common Melodic Patterns

1. Do-Re-Mi-Fa-Sol
2. Mi-Re-Do (most common ending)
3. Re-Ti-Do
Ti-Re-Do
4. Sol-Do (anacrusis or "pick-up")
5. Do-Mi-Sol (major tonic triad)
Do-Me-Sol (minor tonic triad)

6. Fa-Re-Do
7. Do-Mi-Re-Fa-Mi-Sol-Fa-La-Sol-Ti-La-Do-Ti-Re-Do (broken thirds)
8. Sol-La-Ti-Do
9. Sol-Sol-Do } (Common bass clef endings)
10. Fa-Sol-Do }